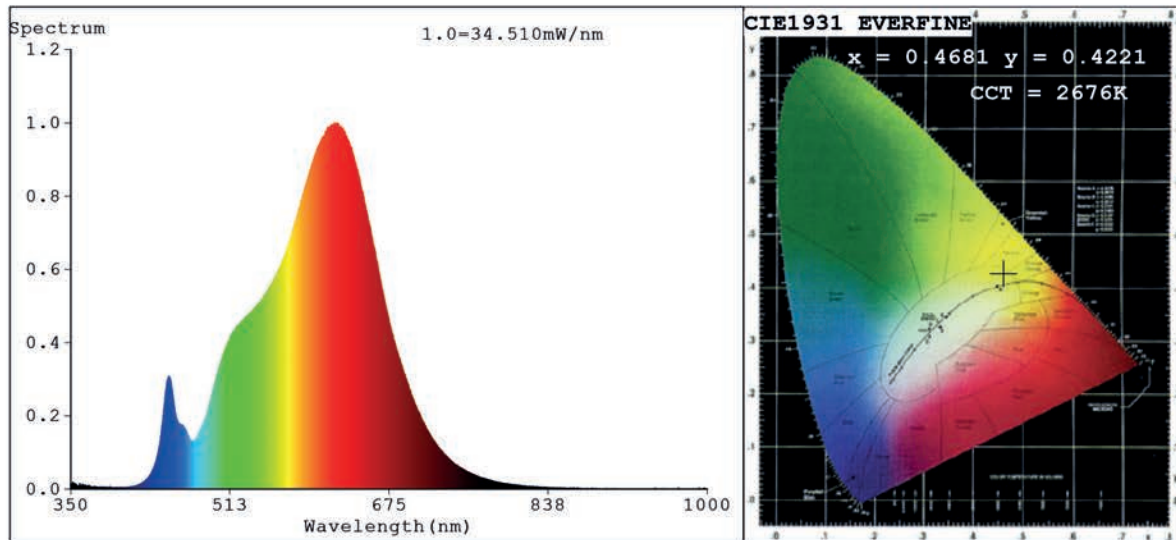


Spectrum Test Report



Color Parameters:

Chromaticity Coordinate: $x=0.4681$ $y=0.4221$ $u'=0.2626$ $v'=0.5329$
 CCT=2676K(Duv=0.0035) Dominant WL:Ld =583.3nm Purity=67.2%
 Ratio:R=26.4% G=71.5% B=2.2%;;Peak WL:Lp=619.1nm FWHM=132.4nm
 Render Index:Ra=91.7 CRI=88.6 TM30:Rf=91 Rg=96
 R1 =91 R2 =95 R3 =100 R4 =93 R5 =91 R6 =97 R7 =91
 R8 =76 R9 =46 R10=89 R11=96 R12=84 R13=92 R14=99 R15=84

Photo Parameters:

Flux = 1561 lm Eff. : 100.26 lm/W Fe = 5.191 W

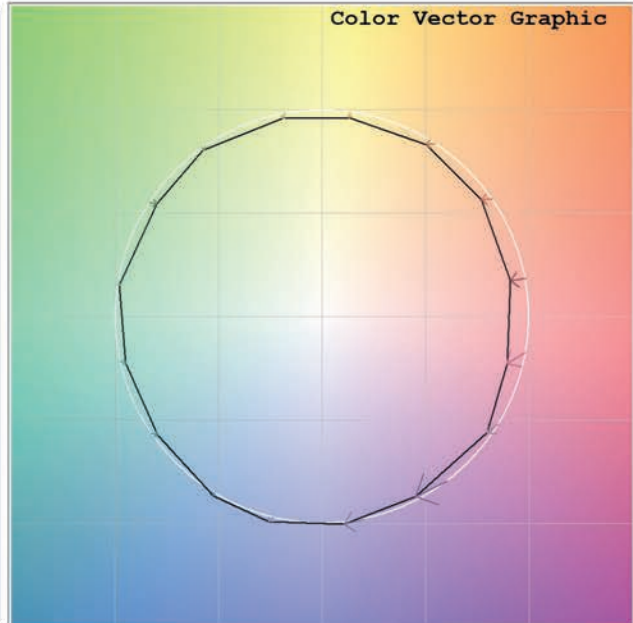
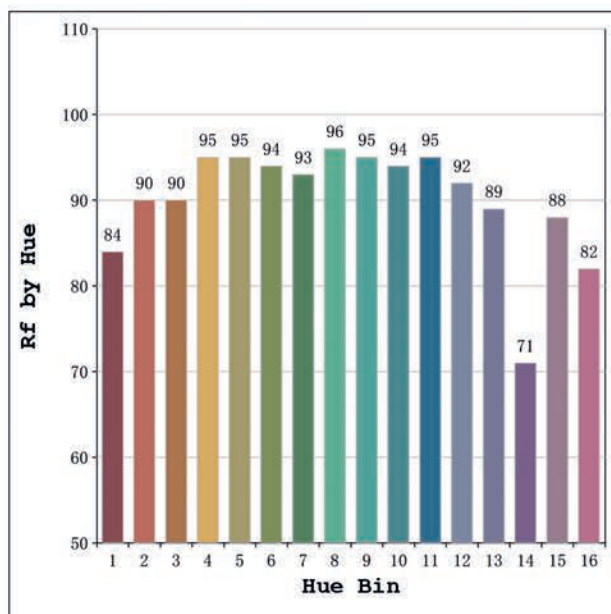
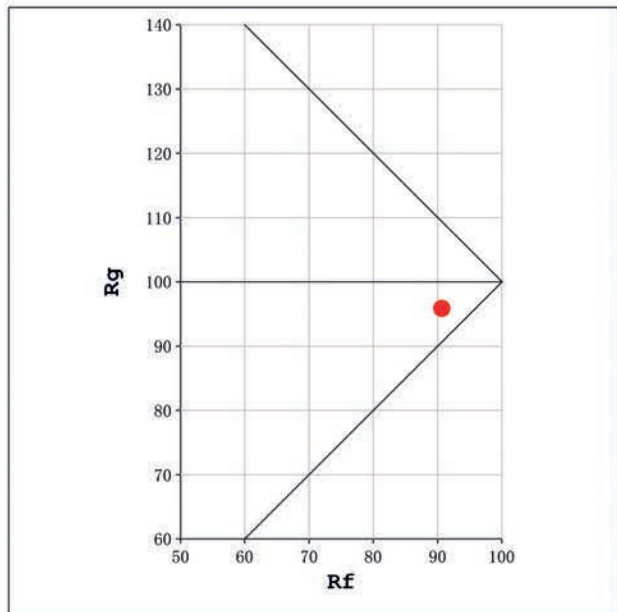
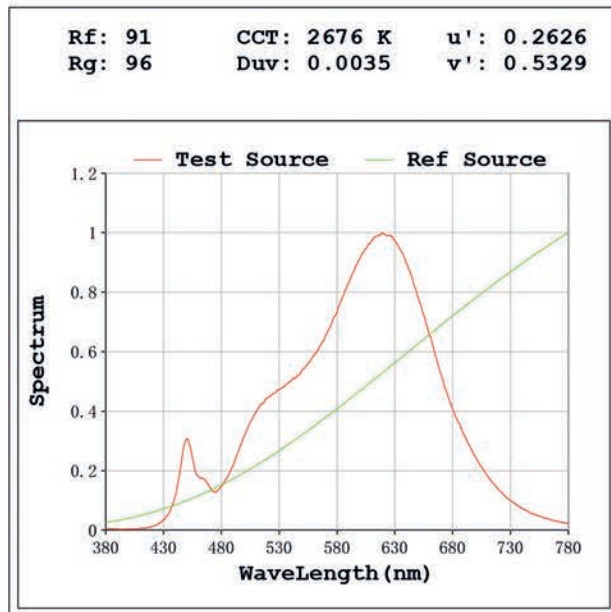
Electrical parameters:

V = 23.998 V I = 0.6487 A P = 15.57 W PF = 1.000

Status: Integral T = 521 ms Ip = 33790 (52%)

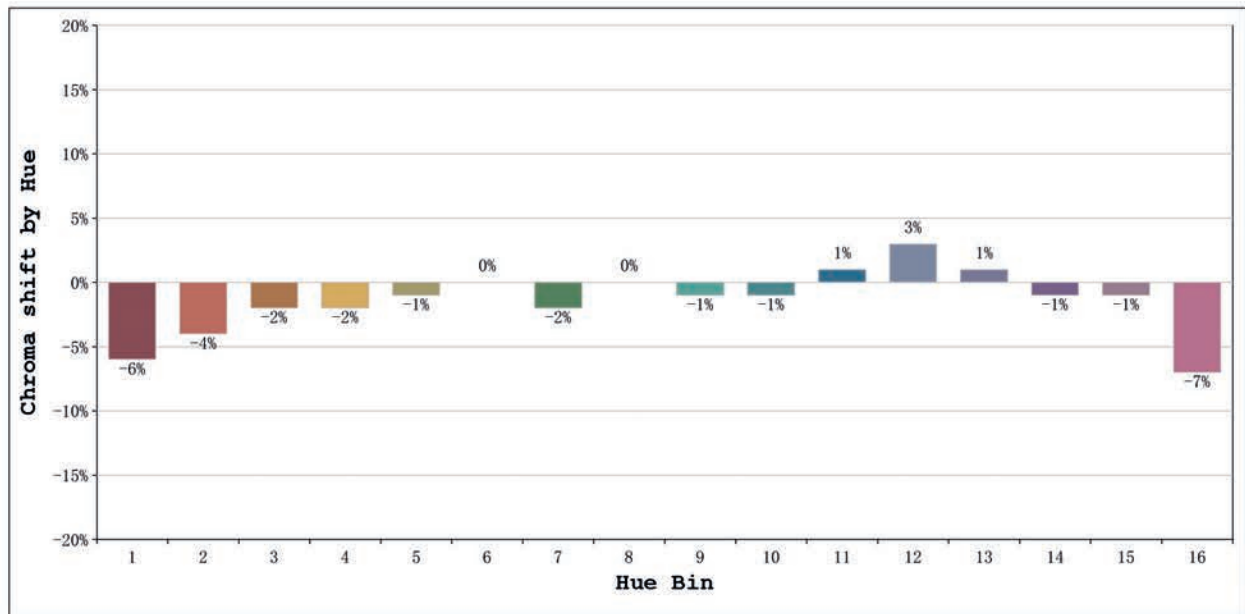
Model:Cob IP67 2700K
 Tester:MªAngeles
 Temperature:1001Deg
 Manufacturer:Luz Negra

Number: 31.208
 Date:2025-05-14 15:39:46
 Humidity:40%
 Remarks:100cm tira flexible



Model:Cob IP67 2700K
 Tester:MªAngeles
 Temperature:1001Deg
 Manufacturer:Luz Negra

Number: 31.208
 Date:2025-05-14 15:39:46
 Humidity:40%
 Remarks:100cm tira flexible



| | | | Graphic shift(%) | |
|---------|-----------------|----|------------------|-----|
| Hue Bin | Hue Angle | Rf | Chroma | Hue |
| 1 | 0.0° - 22.5° | 84 | -6 | 0 |
| 2 | 22.5° - 45.0° | 90 | -4 | 2 |
| 3 | 45.0° - 67.5° | 90 | -2 | 3 |
| 4 | 67.5° - 90.0° | 95 | -2 | 0 |
| 5 | 90.0° - 112.5° | 95 | -1 | 2 |
| 6 | 112.5° - 135.0° | 94 | 0 | 2 |
| 7 | 135.0° - 157.5° | 93 | -2 | 0 |
| 8 | 157.5° - 180.0° | 96 | 0 | 2 |
| 9 | 180.0° - 202.5° | 95 | -1 | 1 |
| 10 | 202.5° - 225.0° | 94 | -1 | 2 |
| 11 | 225.0° - 247.5° | 95 | 1 | 2 |
| 12 | 247.5° - 270.0° | 92 | 3 | -1 |
| 13 | 270.0° - 292.5° | 89 | 1 | -9 |
| 14 | 292.5° - 315.0° | 71 | -1 | -16 |
| 15 | 315.0° - 337.5° | 88 | -1 | -6 |
| 16 | 337.5° - 360.0° | 82 | -7 | -6 |

Model:Cob IP67 2700K
 Tester:MªAngeles
 Temperature:1001Deg
 Manufacturer:Luz Negra

Number: 31.208
 Date:2025-05-14 15:39:46
 Humidity:40%
 Remarks:100cm tira flexible